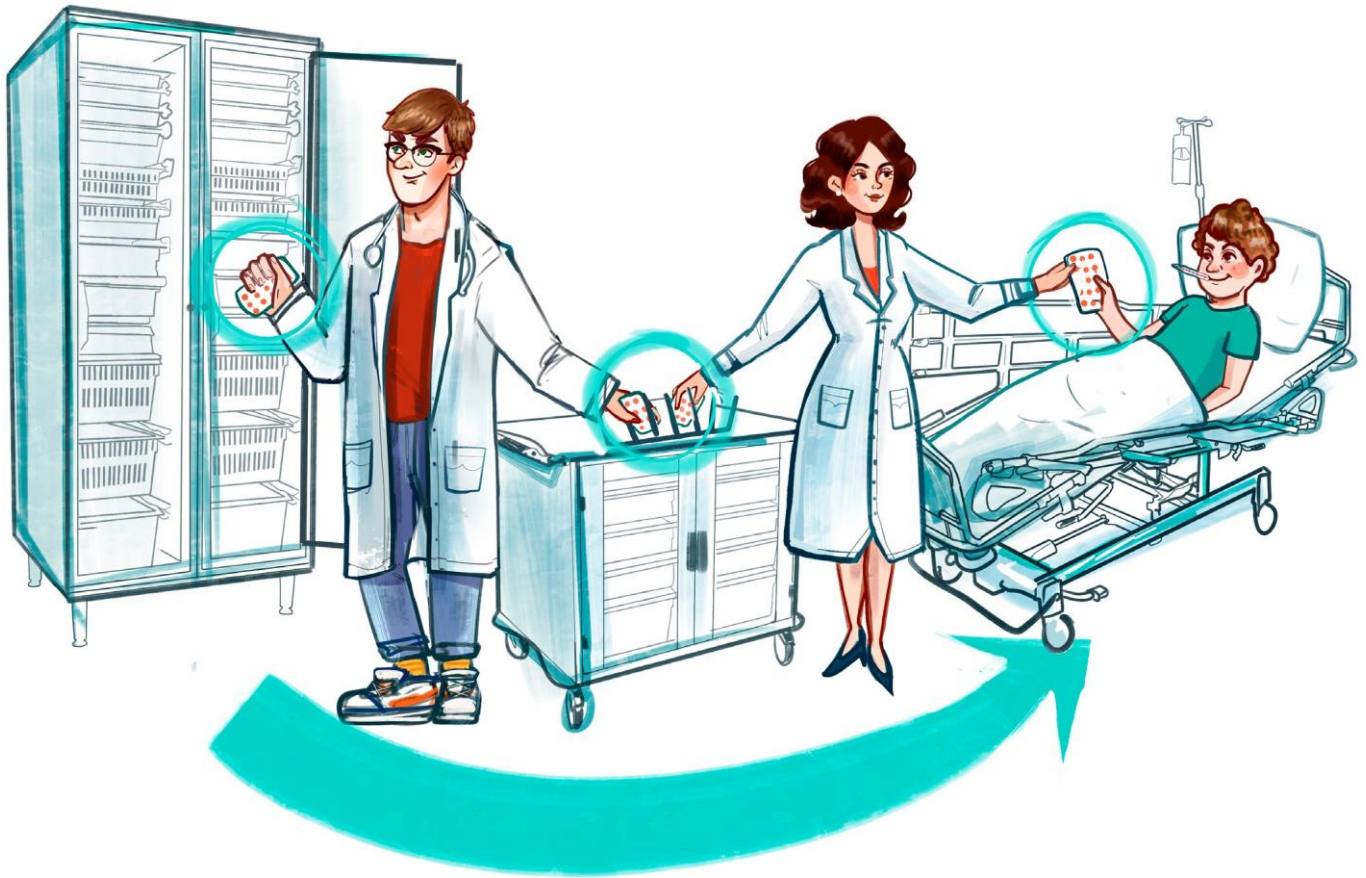




Pharmlogistics: furniture for medical institutions' outfitting



“Pharmlogistics” series of medical furniture is the innovational product referring to modern solutions aimed at transportation, storage, and application of pharmaceuticals within medical institutions. Digital technologies make it possible to effectively monitor and control applicable medicines

“Pharmlogistics” series is the elaborated line of cabinet and transport carts of original structure. Their inner space is purposed for location of pull-out trays. This solution allows using the storage space to the maximum and provides high operability: accessibility, easiness, and informativeness while dealing with different pharmaceuticals.

ISO modules are purposed for storing and transporting of medicines and provide the opportunity for quick transformation of space both inside cabinets and within individual tray modules through the use of movable inner dividers. Fixed seals and reliable locks ensure full control and security of stored pharmaceuticals.

The cabinets of “Pharmlogistics” series rest on wheel supports. This ensures their movability and creates fine conditions for sanitary treatment of medical premises. Removable components of the modular system allow quickly clearing cabinets’ space and cleaning inner surfaces.

“Pharmlogistics” series provide the opportunity for creation of the reliable and functional system to resolve the issues of modern logistics with the use of digital technologies within clinics and hospitals.



■ MOBILE CABINETS	page 4
Locking system	
Foreside color options	
Foreside insert options	
■ MODEL RANGE OF MOBILE CABINET	page 6
■ WHEELED CABINETS	page 8
Locking system	
Foreside color options	
Foreside insert options	
■ MODEL RANGE OF WHEELED CABINETS	page 10
■ CARTS	page 12
Locking system	
Foreside color options	
Foreside insert options	
■ MODEL RANGE OF CARTS	page 14
■ OPEN STORAGE RACKS	page 16
■ FIXED CABINETS (LAMINATED CHIPBOARD)	page 18
Locking system	
Color options of laminated chipboard	
AL foreside inserts	
■ MODEL RANGE OF FIXED CABINETS	page 20
■ MODULAR SYSTEMS ARE PER ISO NORMS	page 22
Standard module dimensions	
Module materials	
Divider options	
Divider effectiveness	
■ TRAY ACCESSORIES	page 24
Stoppers	
Tray marking	
Storage security	

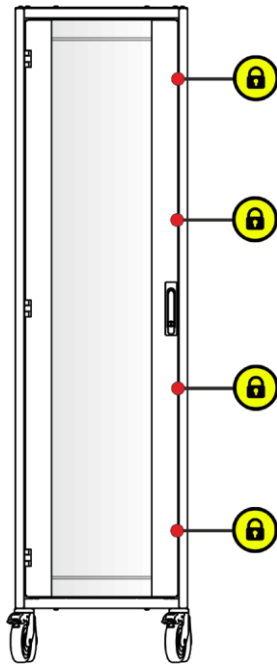
Distinctive features:

- Item bodies are made of metal and protected with polymer powder.
- Cabinets are installed on wheel supports 125 mm in diameter (provided with individual brakes).
- Foresides are made of metal and provided with hardened glass inserts (3 transparency options).
- Foresides locking is ensured by means of cross-bar lock system (multi-point type).



The figure specifies the following configuration:
Cabinet 1X (S) 516x715x1965 mm
Cabinet 2X (S) 981x715x1965 mm
Set of trays (to be configured upon order placing)

Locking system ■



Cabinets are provided with cross-bar locks and twist handles.

Mechanical locking/ unlocking of foreside is done when lock handle is twisted.

Handle is locked in the slot by means of a profile cylinder appliance and a key.

Multi-spot locking system ensures reliable fixation of a door in the closed position.

Hinge design allows opening foresides to 180 degrees.

Foreside color options ■



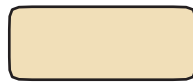
RAL 6019



RAL 5024



RAL 2003



RAL 1015



RAL 1018



RAL 9016

Foreside insert options ■

Transparent
glass

Matt
glass

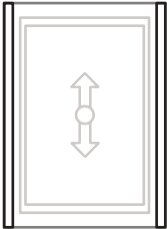
Tinted
glass



In order to increase safety and reliability of glass, it undergoes thermal treatment (hardening). Glass thickness: 4 mm.

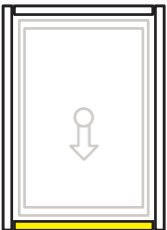
MODEL RANGE OF MOBILE CABINETS

Cabinets are purposed for locating of the modular system as per ISO norms. Item bodies are made of steel coated with polymer powder. They easily withstand sanitary treatment. Advanced mobility of cabinets is ensured by means of self-castoring wheel supports 125 mm in diameter (they are provided with individual brakes). Cabinets are supplied non-assembled.



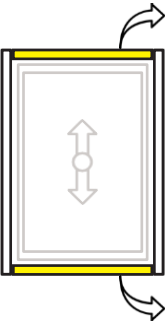
Cabinet ШО-1: single-leaf medical cabinet of open type.

This item is not provided with a hinged foreside and a rare panel for convenient double-sided servicing. The item is purposed for locating and storing of pharmaceuticals within the rooms of limited staff access. It is used as a mobile storage rack.



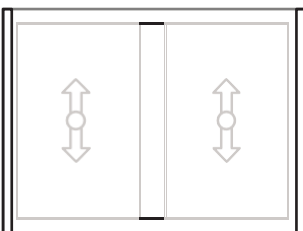
Cabinet ШД-1: single-leaf standard medical cabinet.

Cabinet is provided with a hinged foreside for convenient single-sided servicing. This item is purposed for locating and storing of pharmaceuticals within common access premises. Advanced locking system ensures reliable protection of storage contents. Doors are reversible type. Door orientation shall be specified by a customer during installation of a cabinet.

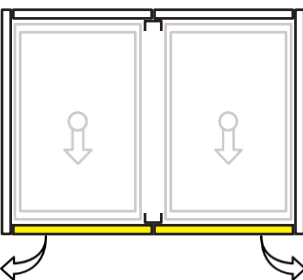


Cabinet ШД-1.2: single-leaf universal cabinet.

Cabinet is provided with two hinged foresides for convenient double-sided servicing. This item is purposed for locating and storing of pharmaceuticals within common access premises. Advanced locking system ensures reliable protection of storage contents.



Cabinet ШО-2: double-leaf medical cabinet of open type. This item is not provided with hinged foresides and rear panels for convenient double-sided servicing. The item is purposed for locating and storing of pharmaceuticals within the rooms of limited staff access.



Cabinet ШД-2: double-leaf standard cabinet. Cabinet is provided with hinged foresides for convenient single-sided servicing. This item is purposed for locating and storing of pharmaceuticals within common access premises. Advanced locking system ensures reliable protection of storage contents.

* - Figures specify top views. Arrows reflect foreside orientation and trays' extension direction.



Cabinet ШО-1
516 x 715 x 1965 mm



Cabinet ШД-1
516 x 715 x 1965 mm



Cabinet ШД-1.2
516 x 715 x 1965 mm



Cabinet ШО-2
981 x 715 x 1965 mm



Cabinet ШД-2
981 x 715 x 1965 mm

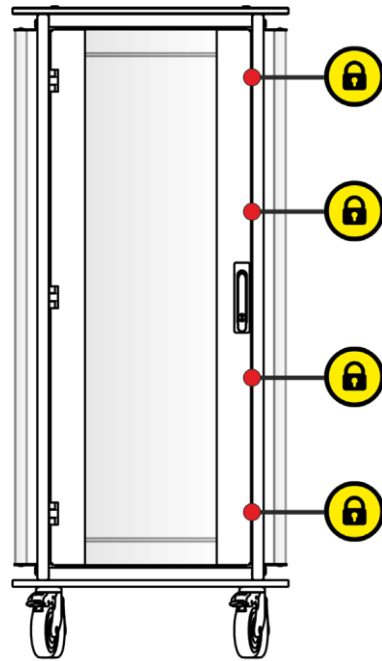
Distinctive features:

- Item bodies are made of metal and protected with polymer powder.
- Wheeled cabinets are installed on wheel supports 125 mm in diameter (they are provided with individual brakes).
- Foresides are made of metal and provided with hardened glass inserts (3 transparency options).
- Foresides locking is ensured by means of cross-bar lock system (multi-point type).
- Wheeled cabinets are provided with handles and safety bumpers for convenient travelling.



The figure specifies the following configuration:
Wheeled cabinet 2X (S) 1095x740x1485 mm
Set of trays (to be configured upon order placing)

Locking system ■



Wheeled cabinets are provided with cross-bar locks and twist handles.

Mechanical locking/ unlocking of foreside is done when lock handle is twisted.

Handle is locked in the slot by means of a profile cylinder appliance and a key.

Multi-spot locking system ensures reliable fixation of a door in the closed position.

Hinge design allows opening foresides to 180 degrees.

Foreside color options ■



RAL 6019



RAL 5024



RAL 2003



RAL 1015



RAL 1018



RAL 9016

Foreside insert options ■

Transparent
glass

Matt
glass

Tinted
glass



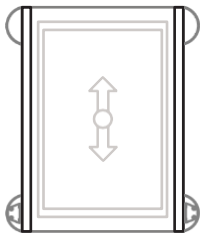
In order to increase safety and reliability of glass, it undergoes thermal treatment (hardening). Glass thickness: 4 mm.

MODEL RANGE OF WHEELED CABINETS

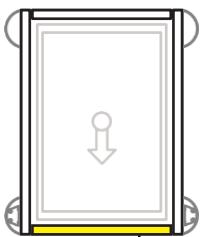
Wheeled cabinets are purposed for locating of the modular system as per ISO norms. Item bodies are made of steel coated with polymer powder. They easily withstand sanitary treatment.

Advanced mobility of wheeled cabinets is ensured by means of self-castoring wheel supports 125 mm in diameter (they are provided with individual brakes).

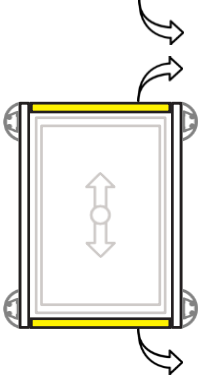
Wheeled cabinets are supplied non-assembled.



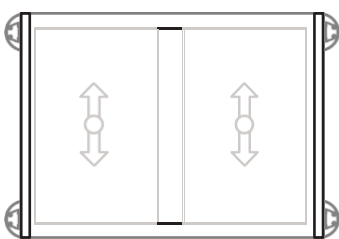
Wheeled cabinet ШТО-1: single-leaf medical cabinet of open type. This item is not provided with a hinged foreside and a rare panel for convenient double-sided servicing. The item is purposed for locating and storing of pharmaceuticals within the rooms of limited staff access. It is used as a mobile storage rack.



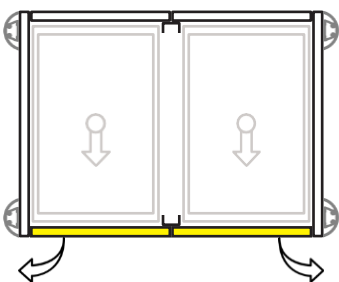
Wheeled cabinet ШТД-1: single-leaf standard medical cabinet. Cabinet is provided with a hinged foreside for convenient single-sided servicing. This item is purposed for locating and storing of pharmaceuticals within common access premises. Advanced locking system ensures reliable protection of storage contents. Doors are reversible type.



Wheeled cabinet ШТД-1.2: single-leaf universal cabinet. Cabinet is provided with two hinged foresides for convenient double-sided servicing. This item is purposed for locating and storing of pharmaceuticals within common access premises. Advanced locking system ensures reliable protection of storage contents.



Wheeled cabinet ШТО-2: double-leaf medical cabinet of open type. This item is not provided with hinged foresides and rear panels for convenient double-sided servicing. The item is purposed for locating and storing of pharmaceuticals within the rooms of limited staff access.



Wheeled cabinet ШТД-2: double-leaf standard cabinet. Cabinet is provided with hinged foresides for convenient single-sided servicing. This item is purposed for locating and storing of pharmaceuticals within common access premises. Advanced locking system ensures reliable protection of storage contents.

* - Figures specify top views. Arrows reflect foreside orientation and trays' extension direction.



Wheeled cabinet ШТО-1
630 x 740 x 1485 mm



Wheeled cabinet ШТД-1
630 x 740 x 1485 mm



Wheeled cabinet ШТД-1.2
630 x 740 x 1485 mm



Wheeled cabinet ШТО-2
1095 x 740 x 1485 mm



Wheeled cabinet ШТД-2
1095 x 740 x 1485 mm

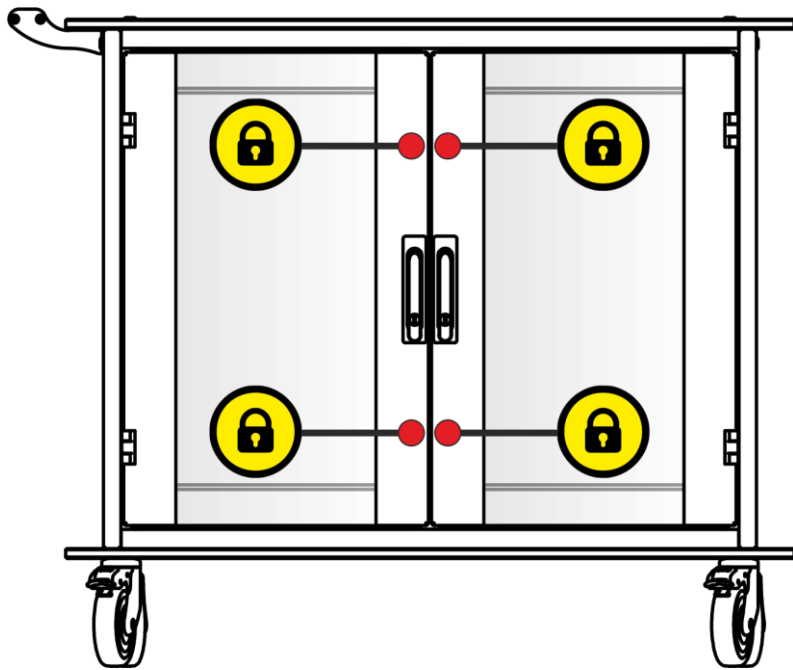
Distinctive features:

- Item bodies are made of metal and protected with polymer powder.
- Carts are installed on wheel supports 125 mm in diameter (they are provided with individual brakes)
- Foresides are made of metal and provided with hardened glass inserts (3 transparency options).
- Foresides locking is ensured by means of cross-bar lock system (multi-point type).
- Carts are provided with handles and safety bumpers for convenient travel.
- Table board material: chemically resistant HPL plastic.



The figure specifies the following configuration:
Cart 1X (U) 630x740x975 mm (table board)
Set of trays (to be configured upon order placing)

Locking system ■



Carts are provided with cross-bar locks and twist handles.

Mechanical locking/ unlocking of foreside is done when lock handle is twisted.

Handle is locked in the slot by means of a profile cylinder appliance and a key.

Multi-spot locking system ensures reliable fixation of a door in the closed position.

Hinge design allows opening foresides to 180 degrees.

Foreside color options ■



Foreside insert options ■

Transparent
glass

Matt
glass

Tinted
glass



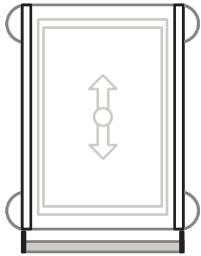
In order to increase safety and reliability of glass, it undergoes thermal treatment (hardening). Glass thickness: 4 mm.

MODEL RANGE OF CARTS

Carts are purposed for locating and transporting of the modular system as per ISO norms. Item bodies are made of steel and covered with polymer powder coating. They easily withstand sanitary treatment.

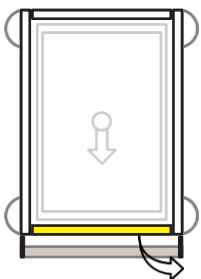
Advanced mobility of carts is ensured by means of self-castoring wheel supports 125 mm in diameter (they are provided with individual brakes).

Carts are supplied non-assembled.



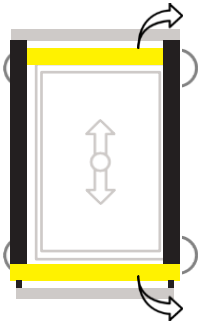
Cart TO-1: single-leaf medical cart of open type.

This item is not provided with a hinged foreside and a rear panel for convenient double-sided servicing. The item is purposed for locating and storing of pharmaceuticals within the rooms of limited staff access. It is used as a mobile storage rack.

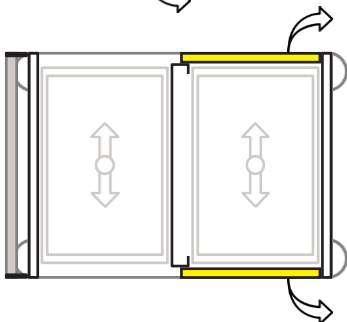


Cart TД-1: single-leaf standard medical cart. This item is provided with hinged foreside for convenient single-sided servicing. This item is purposed for locating and storing of pharmaceuticals within common access premises. Advanced locking system ensures reliable protection of storage contents.

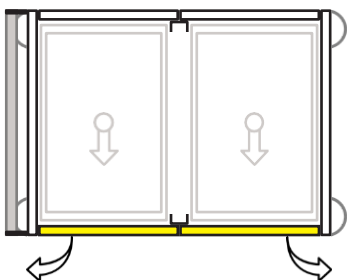
Doors are reversible type.



Cart TД-1.2: single-leaf universal medical cart. This item is provided with a hinged foreside for convenient single-sided servicing. This item is purposed for locating and storing of pharmaceuticals within common access premises. Advanced locking system ensures reliable protection of storage contents.



Cart TД-2.2: double-leaf combined medical cart. One section is through type and not provided with a hinged foreside and a rear panel. The other section is an isolated module, which is provided with two hinged doors for convenient double-sided servicing. This item is purposed for locating and storing of pharmaceuticals within common access premises.



Cart TД-2: double-leaf standard medical cart. This item is provided with hinged foresides for convenient single-sided servicing. The item is purposed for locating and storing of pharmaceuticals within common access premises.

Advanced locking system ensures reliable protection of storage contents.

* - Figures specify top views. Arrows reflect foreside orientation and trays' extension direction.



Single-section carts are provided with 10 attachments to mount inner layout. Double-section carts are provided with 20 attachments.

Table board and anti-collision bumpers are made of HPL plastic to prevent cart metal body from touching walls while in motion.

Table boards correspond to size and shape of cart bases for convenient travelling within limited space.



Cart TO-1
630 x 740 x 975 mm



Cart ТД-1
630 x 740 x 975 mm



Cart ТД-1.2
630 x 740 x 975 mm



Cart ТД-2.2
1095 x 740 x 975 mm



Cart ТД-2
1095 x 740 x 975 mm

* - Dimensions refer to a table board (without consideration of handles).

OPEN STORAGE RACKS

Distinctive features:

- Frame structure is made of metal and covered with polymer powder coating.
- There are options available: mobile (M) racks are installed on wheel supports 125 mm in diameter; and static (S) racks, which are installed on adjustable supports 160 mm in diameter.
- Modular design allows arranging multi-section sets of different purposes.



The figure specifies the following configuration:
Rack CX-1 (on wheel supports) 514 x 662 x 1965 mm
Rack CX-2 (on wheel supports) 977 x 662 x 1965 mm
Set of trays (to be configured upon order placing).



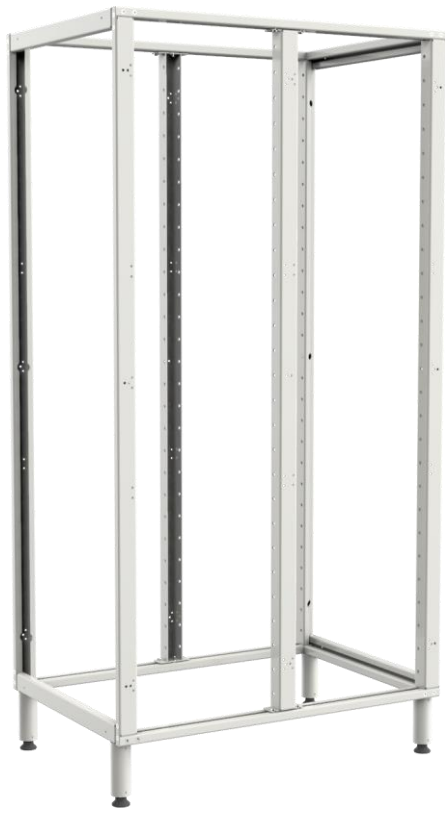
Rack CX-1 (on wheel supports)
514 x 662 x 1965 mm



Rack CX-2 (on wheel supports)
977 x 662 x 1965 mm



Rack CX-1 (on legs)
514 x 662 x 1965 mm



Rack CX-2 (on legs)
977 x 662 x 1965 mm

FIXED CABINETS (LAMINATED CHIPBOARD)

Distinctive features:

- Item bodies are made of laminated chipboard and edged with PVC.
- Cabinets are installed on frames with adjustable supports (h = 160 mm).
- There are two foreside options available: laminated chipboard/ glass in AL profile.
- Foresides are locked by means of cross-headed locking system.



The figure specifies the following configuration:
 Cabinet ША-2 (ABS panels/ mounting rails) 886 x 728 x 1965 mm
 Cabinet ША-1 (ABS panels) 451 x 728 x 1965 mm
 Set of trays (to be configured upon order placing).

Locking system ■



Cabinets are provided with cross-headed locks (spacer type).

Two-point locking system ensures fixation of door in the closed position.

Locking/ unlocking of a foreside is done by means of direct twisting of a key.

Hinge design allows opening foresides to 180 degrees.

Foreside is reversible type.

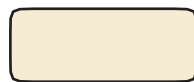
Color options of laminated chipboard ■



Green



Grey



Cream



Beech



Smoky oak



Titanium

AL foreside inserts ■

Transparent glass

Matt glass

Tinted glass



Glass thickness: 4 mm.

MODEL RANGE OF FIXED CABINETS (LAMINATED CHIPBOARD)

Cabinets are purposed for locating of the modular system as per ISO norms. Item bodies are made of laminated chipboard. Frame structure is installed inside (2 options available). Cabinets are installed on adjustable supports 160 mm in diameter (they neutralize floor unevenness).

Cabinets are supplied non-assembled.



Frame structure.

Segmented wall panels are made of ABS plastic.

Universal solution allows locating ISO trays at the spacing of 32 mm along the entire height of a panel.

Panels are provided with convenient roller-type inserts, which ensure smoothness installation of a tray inside a cabinet.

Slides' shape allows fixing trays in the pulled-out position.



Frame structure.

Mounting rails are purposed for installation of ABS plastic slides.

Special solution: location of certain number of trays.

Configuration shall be specified when arranging the order.

Rails are made of metal and covered with polymer powder coating.

Perforation (marking) is purposed to ease installation of slides. Perforation spacing: 64 mm.

* - The figure specifies left-hand wall of a fixed cabinet. Color of laminated chipboard is smoked oak. Trays can be fixed in the end position in case there are stoppers available.



Cabinet ША-1 (ABS panels)
451 x 728 x 1965 mm



Cabinet ША-2 (ABS panels)
886 x 728 x 1965 mm



Cabinet ША-1 (mounting rails)
451 x 728 x 1965 mm



Cabinet ША-2 (mounting rails)
886 x 728 x 1965 mm

MODULAR SYSTEMS AS PER ISO NORMS

Distinctive features:

- Standard module dimensions: 600 x 400 mm. Module height: 50/ 100/ 200 mm.
- There are 3 material options available: transparent polycarbonate (PC), grey ABS plastic and metal covered with polymer powder coating.
- Modules are characterized with high load capacity (area load: up to 50 kg).
- There are 3 types of dividers considered for the use inside a module for more effective usage of the inner space (fixed/ reversible/ removable dividers).



Why choose the modular design?

Dual application of the modular concept is the great advantage (storage and logistic system).

Modules can be easily combined to each other and used in the “Pharmlogistics” series in this manner.

Other advantages: easy cleaning/ sterilization, convenient partition, and marking of modules. Besides, the modular system can be easily and quickly transported as one piece to the point of destination.

Universal operating conditions

H+H modular system is universal in use. This especially refers to the places of particular importance of optimal space usage and tidiness of cabinets and shelves.

What to store in modules?

In general, any items of the appropriate size can be stored in modules. H+H modular system especially suits for clearly visible arrangement of pharmaceuticals, dressing materials, welfare items, sanitary appliances, linen, and liquids, e.g., infusion solutions.

Standard module dimensions ■



600 x 400 x 50 mm



600 x 400 x 100 mm



600 x 400 x 200 mm

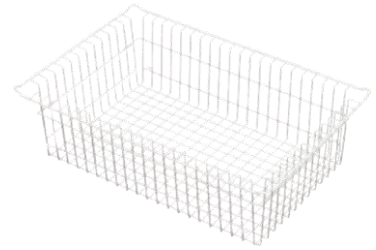
Module materials ■



Grey ABS plastic



Transparent PC
(polycarbonate)



Metal with polymer
powder coating

Divider options ■



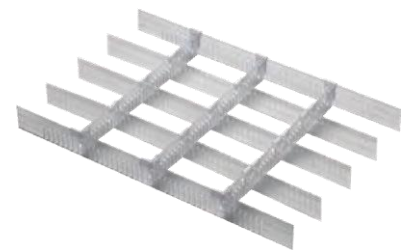
Fixed dividers

Cross-headed dividers are joined with trays by means of the «ClipOn» system.



Reversible dividers

Cross-headed dividers are combined to mobile dividers.



Removable dividers

Dividers are not joined with trays and shall be removed as one piece for more effective cleaning.

Divider effectiveness ■



0% of space saving

A tray without dividers.



10% of space saving

A tray with fixed dividers.

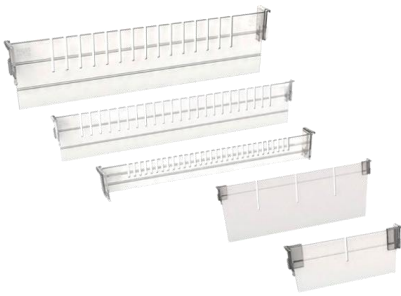


30% of space saving

A tray with reversible dividers.

TRAY ACCESSORIES

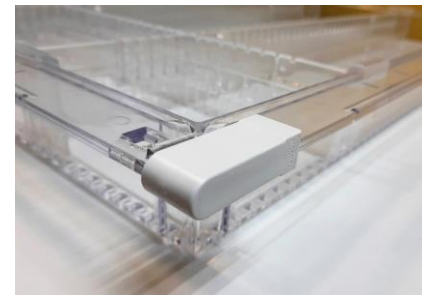
Stoppers



Cross-headed dividers.

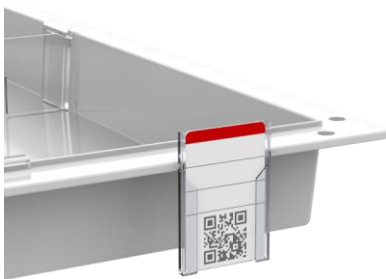


Mobile dividers.



Pull-out mechanism stoppers.

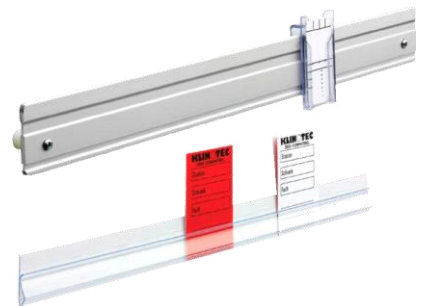
Tray marking



Label boards 40/60 PC (polycarbonate)



Label boards 60/40 (PVC)



Marking bars

Safe storage

To limit the access to tray contents, a seal shall be used.

Tray covers (2 types).
Transparent covers are made of polycarbonate.
Non-transparent covers are made of plastic.

Single-use seals (2 types).
The items are made of plastic and provided with unique tags.

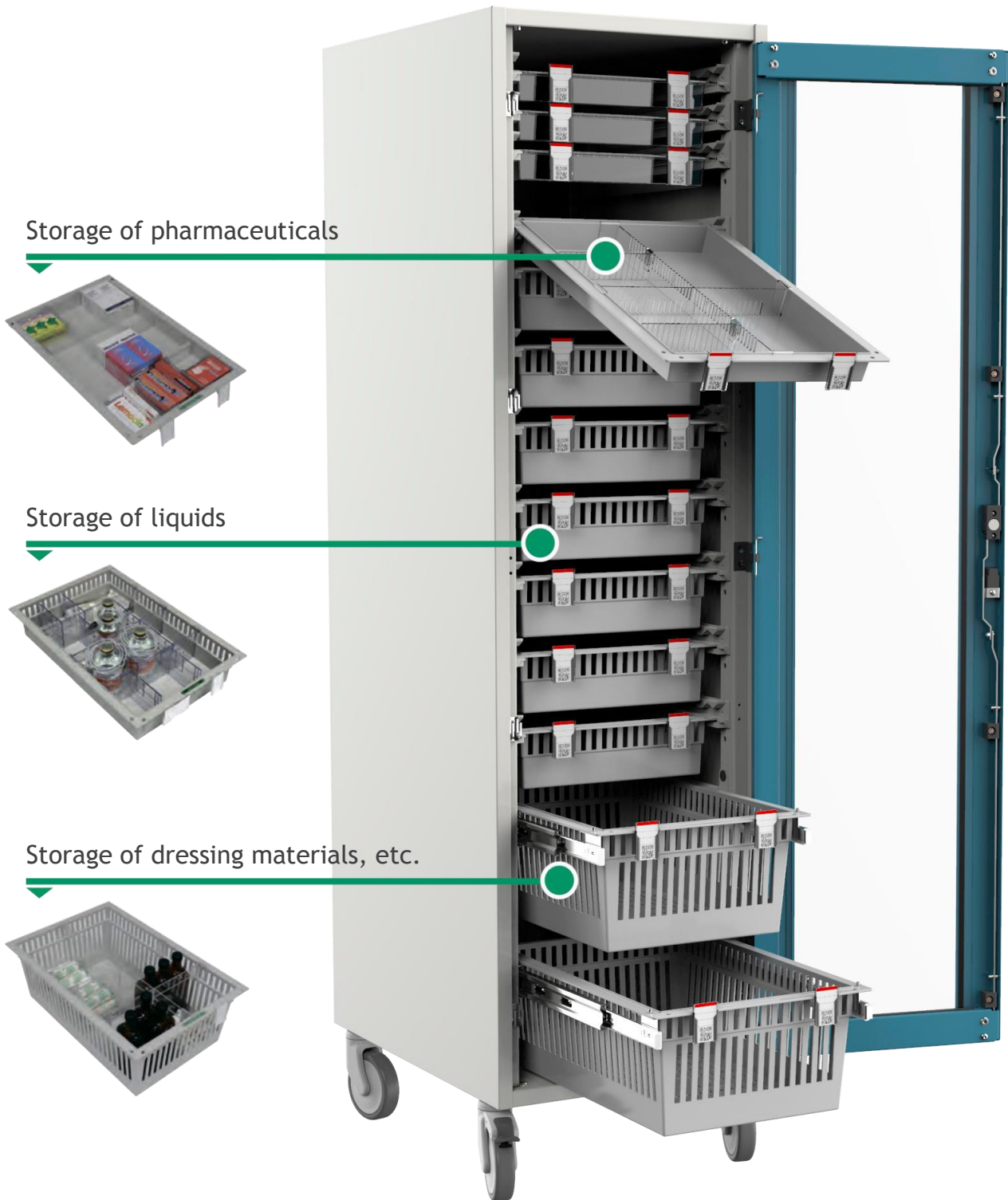


* - The above figures specify symbolic marking labels; their real exterior may be different.



Modular system ensure better saving effectiveness

Modular design allows using inner space of cabinets to the maximum. Spacing of trays' location is divisible by 64 mm.



Inner space can be saved by 30% by means of flexible dividers.



1 : 16



Short insight of new series of furniture by
Aybolit Trading Company



29 : 20



New “Pharmlogistics” series of furniture by
Aybolit Trading Company (detailed review)

Aybolit Trading Company

603146, 68 Kuznechikhinskaya
Street, Nizhny Novgorod, Russia.
Telephone: +7 (831) 417-89-98
Web-site: www.aybolit2000.ru



Instagram **tdaybolit**