



LAB EQUIPMENT

AyLab Organizer – integrated modular system of lab furniture.

While designing this line we based on the existing solutions of the overseas companies, used our own experience and searched for reasonable process developments.

General lab furniture line – work desks, cabinets, racks, carts, file cabinets, wash sinks - is presented as unified units and each of them may be adopted by means of adjustable options.

For example, a lab desk may be simple, open or compound type, fitted with an add-on structure that accommodates separate trays or shelves. It can also accommodate a computer monitor that would save a desk's working space, mounting for keyboard shelf is also considered. And so on.

A lab desk with wash sink can be fitted with protective screen made of chemically resistant plastic; this table can be complete with a rolling file cabinet, add-on structure, removable trays, drying device, or shelves.

Meanwhile the dimensions of all items are aligned, which enables their unity and interchangeability. Each kind of furniture and each unit may be adopted for certain working conditions.

Functionality is the main principle of the AyLab Organizer furniture system. File cabinets and carts are fitted with reliable self-castoring wheels. Each work station can be easily disengaged and set ready for sanitary cleaning. The same function is performed by "transparent" structure that is declared as a basic one for all components of this system.

AyLab Organizer system provides certain solutions for the following working tasks:

- Handling chemical agents and specimens on convenient and reliable working surfaces;
- Separate storage of small accessories;
- Storage of lab materials within humid and aggressive environments (short-term or reliable long-term one);
- Arrangement of heavy high-precision equipment;
- Document management;
- Transportation of different cargos, specimens, and equipment.

Table of contents

Lab cabinets with ventilation unit.....	4
Lab desks.....	8
Lab file cabinets.....	16
Lab desks with wash sink.....	20
Lab desks for equipment arrangement.....	26
Lab carts.....	28
Modular storage systems.....	32
Single-leaf lab cabinets.....	34
Double- leaf lab cabinets.....	40

Lab cabinets with ventilation unit



Advantages

Lab cabinet with ventilation unit ШВ is purposed for outfitting of diagnostic labs in order to enable chemical analysis of materials. Cabinet dimensions (WxDxH) 1200x700x2140 mm.

CONVENIENT

- »Transparent» structure - face and side cabinet panels are made of glass.
- Trizonal exhaust screen arranges effective elimination of different density gases.
- Дверка шкафа сдвижная – высота проёма 500 мм.
- Smooth door fixing in any intermediate position is achieved by means of weight compensation system.

SAFETY

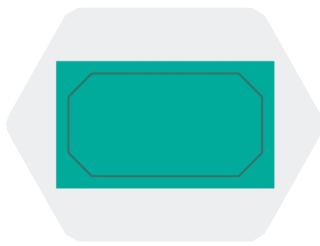
- »Stop leak» system prevents fluids from inflowing into a chamber corners and simplifies cleaning.
- Armored glass provides protection from chips and accidental injuries (in case of glass fracture).
- Adjustable supports – компенсируют неровности пола.
- High structural durability – table boards may bear unified load up to 300 kg.
- Materials used for fabrication perform antimicrobial functions, prevent fungi/ mold growth.

RELIABILITY

- High chemical resistance is obtained by means of usage of modern materials.
- Table board – химически стойкий HPL plastic.
- Frame material – steel with antimicrobial polymer coating (provides highest grade protection of metal parts from corrosion and mechanic injuries).
- Wall-adjacent piece 200 mm in height is made of stainless steel.
- Drainage sink is made of chemically resistant polypropylene (option).
- Heat-resistant insert is made of mineral stone, 450x600 mm (option).

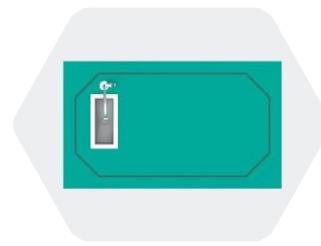
Fabrication versions

ШВ-1па



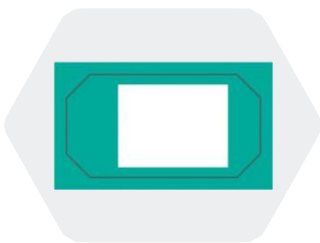
- Table board: HPL plastic with «stop leak» system.

ШВ-2па



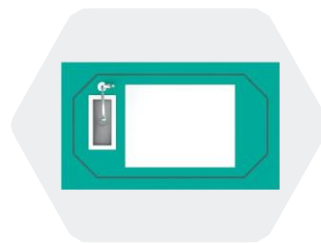
- Table board: HPL plastic + polypropylene wash sink. Complete with mix tap and S-tube.

ШВ-1ка

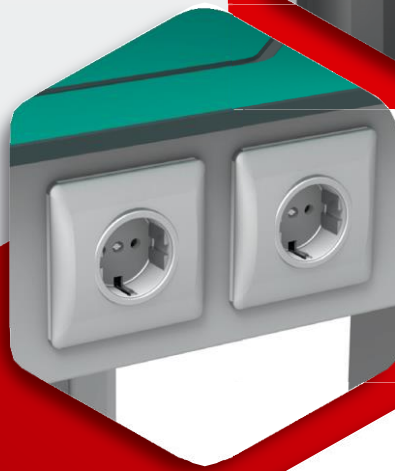


- Table board: HPL plastic + heat-resistant insert.

ШВ-2ка



- Table board: HPL plastic + heat-resistant insert + polypropylene wash sink. Complete with mix tap and S-tube.



Exhaust chamber

- ◆ Work surface (chamber table board) – HPL plastic.
- ◆ Frame construction – metal frame with polymer coating.
- ◆ Wall-adjacent piece – stainless steel (height 200 mm).
- ◆ Trizonal exhaust system (perforated back screen).
- ◆ Sockets – European standard, earthed type.

Exhaust chamber options

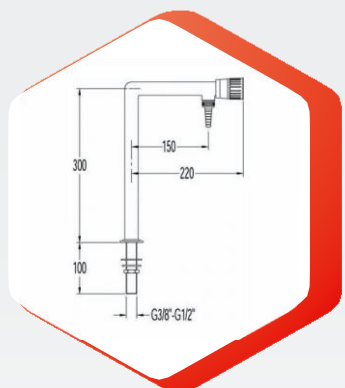


*Polypropylene drainage sink
250x100x150 mm*

Sink is made of anticorrosive polypropylene. Fabrication method: pressure casting, fitted with spiral drain.

This is a single piece seamless item. Color: Polysink with anti-reflection properties.

Complete with S-tube.



*Water tap
(L - shaped)*

Water taps can be fitted with valves with oil caps and sealed by means of EPDM (rubber based on mixed ethylene, propylene and diene monomer), or valves with ceramic caps of ¼ revolution.

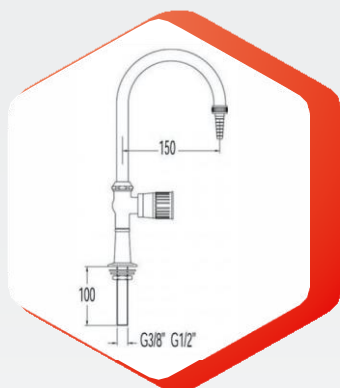


*Polypropylene drainage sink
100x100x100 mm*

Sink is made of anticorrosive polypropylene. Fabrication method: pressure casting, fitted with spiral drain.

This is a single piece seamless item. Color: Polysink with anti-reflection properties.

Complete with S-tube.



*Water tap
(S-bend type)*

Durable connecting sleeve (removable type) complies with DIN 12898. Gates comply with EN 13792:2000; they are made of acid-resistant ABS-plastic.

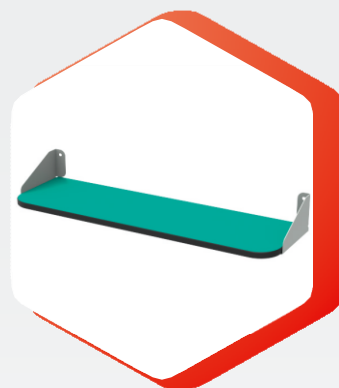
Taps comply with DIN 12918.

Max operating pressure - 10 Bar.



*Sockets for extra device
connection*

To be located on front pedestal panel (under table board), cut-in type, earthing/ protective cover are provided. Protection grade: IP44.

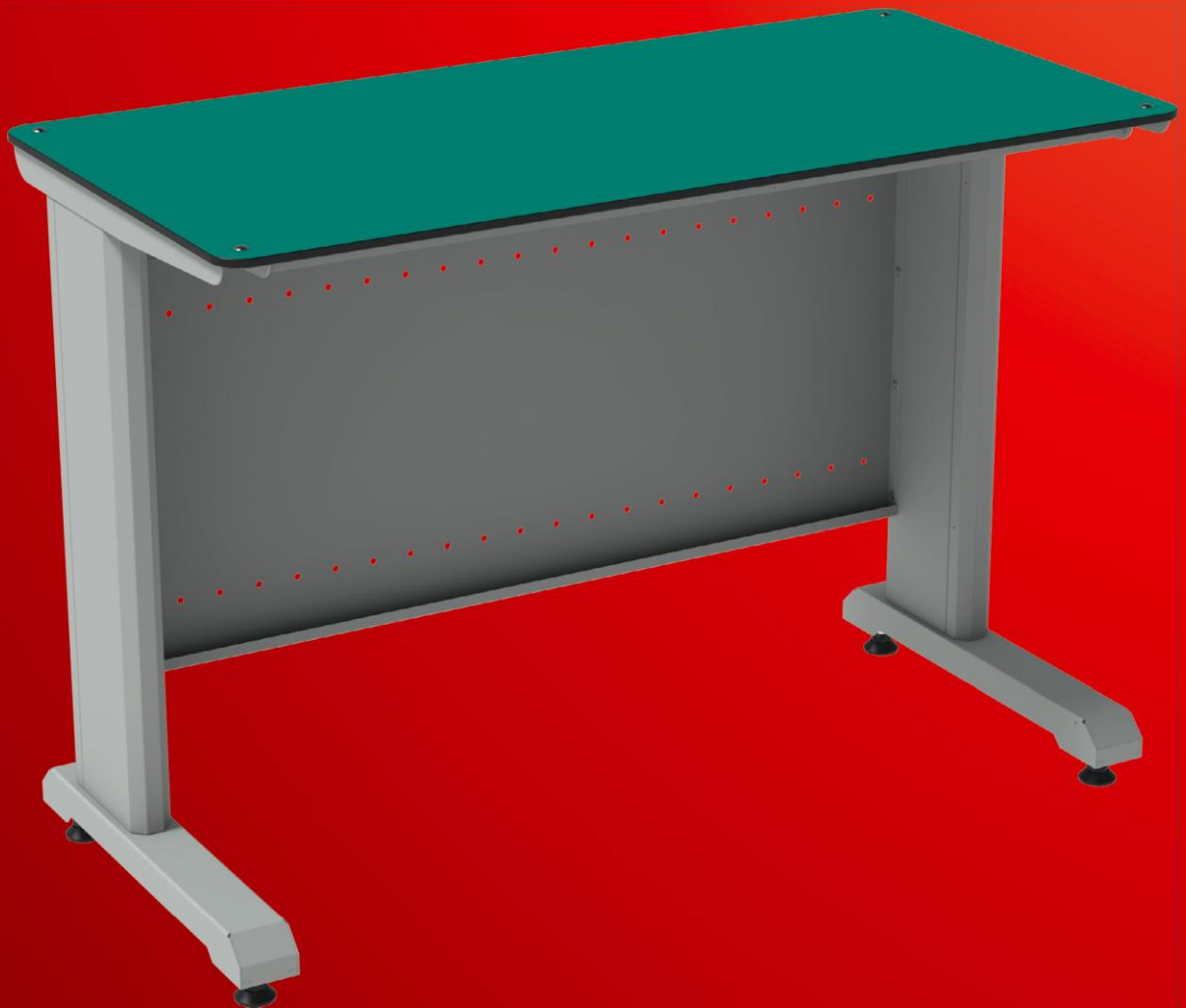


Shelf 160x135 mm

This item is purposed for arrangement of extra lab accessories within a lab cabinet ЛЛБ.

Material: steel with polymer coating and high strength chemically-resistant plastic.

Lab desks



Advantages

Lab tables are purposed for outfitting of diagnostic labs, hospitals and healthcare providers.

CONVENIENT

◆ Structure «transparency» improves treatment accessibility, minimizes dust accumulation and creates no obstacle for free air circulation.

QUALITY

◆ High table board chemical resistance (HPL plastic table board), MICROBAN® protection, and high moist / wear resistance performance.

SAFETY

◆ "Stop leak" system prevents fluid spillage on the floor. Rounded corners simplify cleaning process and improve operating features of an item.

Work surface – high strength chemically resistant HPL plastic 600x900/1200/1500 mm.

Frame construction – steel frame with antimicrobial coating (consists of 2 welded supports, connecting screen and two stiffeners).

Fabrication versions

СЛ-1-900a



◆ Dimensions: 900x600x850 mm

СЛ-1-1200a



◆ Dimensions: 1200x600x850 mm

СЛ-1-1500a



◆ Dimensions: 1500x600x850 mm



Lab table

- ◆ Work surface (table board) – HPL plastic.
- ◆ Frame construction – metal frame with polymer coating.
- ◆ Adjustable supports.
- ◆ Rounded table boards.
- ◆ Options (add-on structure + trays + shelves).

Lab table options



Cable organizer

Purposed for arrangement of group sockets and cable routing.



Wall-adjacent piece

This item limits a table's work surface and prevents small accessories from dropping on the floor from backside.



Computer unit platform

This item is purposed for arrangement of computer units. Bracket is standard type; to be mounted on left/ right table support (as per customer's choice).



Single add-on structure
Height: 355 mm

This item is purposed to improve functionality of table by means of arrangement of hinged components (trays, shelves, brackets).

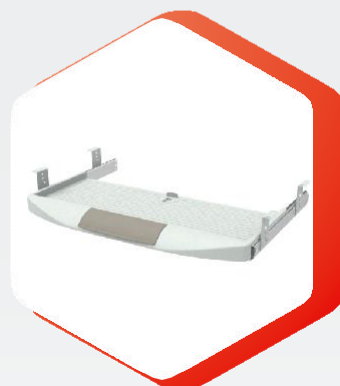
The following options are available as per table length: 900/1200/1500 mm accordingly.



Double add-on structure
Height: 555 mm

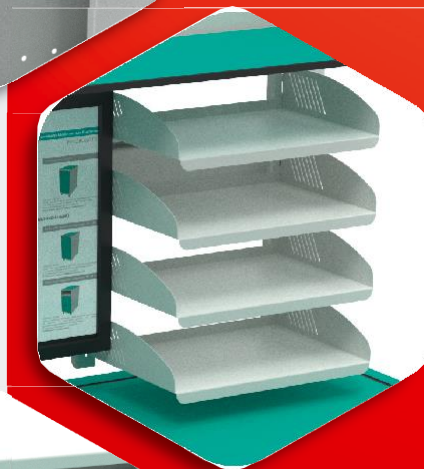
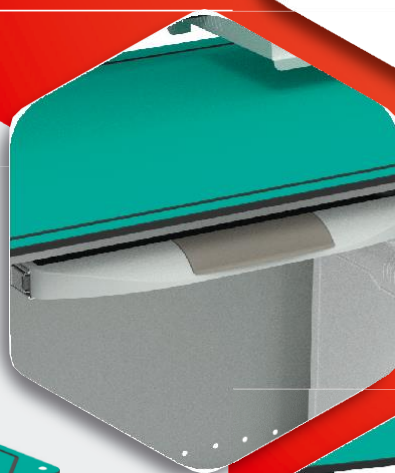
This item is purposed to improve functionality of table by means of arrangement of hinged components (trays, shelves, brackets).

The following options are available as per table length: 900/1200/1500 mm accordingly.



Keyboard shelf

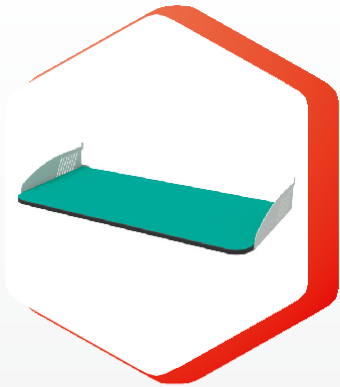
This item is purposed for arrangement of keyboard under table board and widen work surface.



Lab table

- Computer unit platform.
- Keyboard shelf.
- A4 documents tray.
- Adjustable shelf and tray for small accessories.
- Rounded table boards.

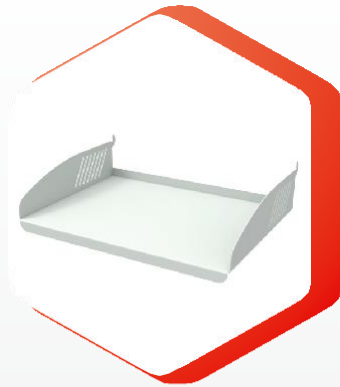
Hinged components for add-on structures of lab tables



Shelf 515x250 mm

This item is purposed for arrangement of different documents and lab accessories.

Material: steel with chemically resistant plastic polymer coating.



Tray 305x220 mm

This item is purposed for arrangement of different documents and lab accessories.

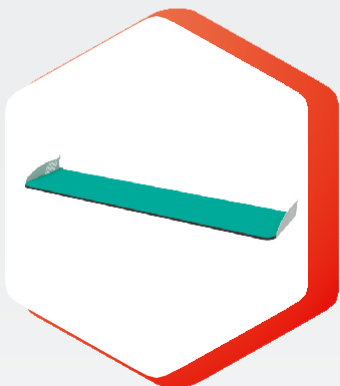
Material: steel with polymer coating.



Mounting panel

This item is purposed for combining of a number of trays (located one under the other) into a unit.

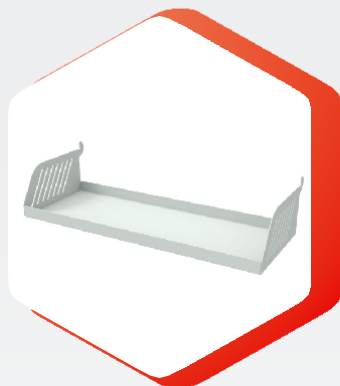
Material: steel with polymer coating.



Shelf 1030x250 mm

This item is purposed for arrangement of different documents and lab accessories.

Material: steel with chemically resistant plastic polymer coating.



Tray 305x113 mm

This item is purposed for arrangement of small accessories.

Material: steel with polymer coating.



VESA bracket

This item is purposed for nounting of computer monitors. It enables improving functionality of a table's work surface.

Mounting standard: VESA MIS-D 75/100.

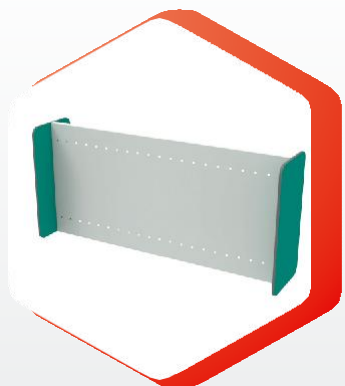
Material: steel with polymer coating.



Lab table, island type

- Work surface (table board) – HPL plastic.
- Frame construction – metal frame with polymer coating.
- Add-on structure with adjustable shelves made of HPL plastic (adjustment spacing is 25 mm).
- Fabrication versions/ configurations
(table board length: 1200/1500 mm, configuration: 2/3/4 tables).

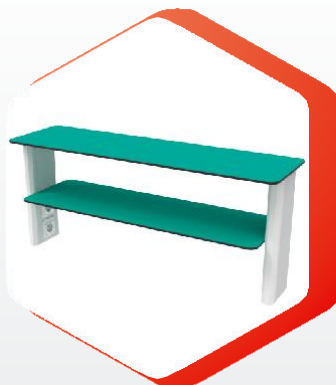
Lab table options



Connecting kit for island tables

High strength plastic panels enable combination of two lab tables into an island table unit.

The following versions are available as per table width: 1200/1500 mm.

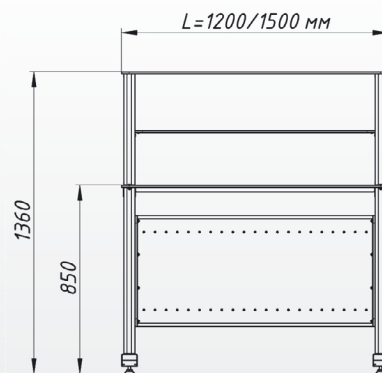


Island table add-on structure 350x510 mm

This item is purposed for arrangement of different lab accessories.

It enables rational work surface usage.

The following versions are available as per table width: 1200/1500 mm.



Two versions are available as per table length: L=1200 mm and L=1500 mm

Configuration versions of island type tables



*2 tables + add-on structure.
Unit: 1200x1200 mm*

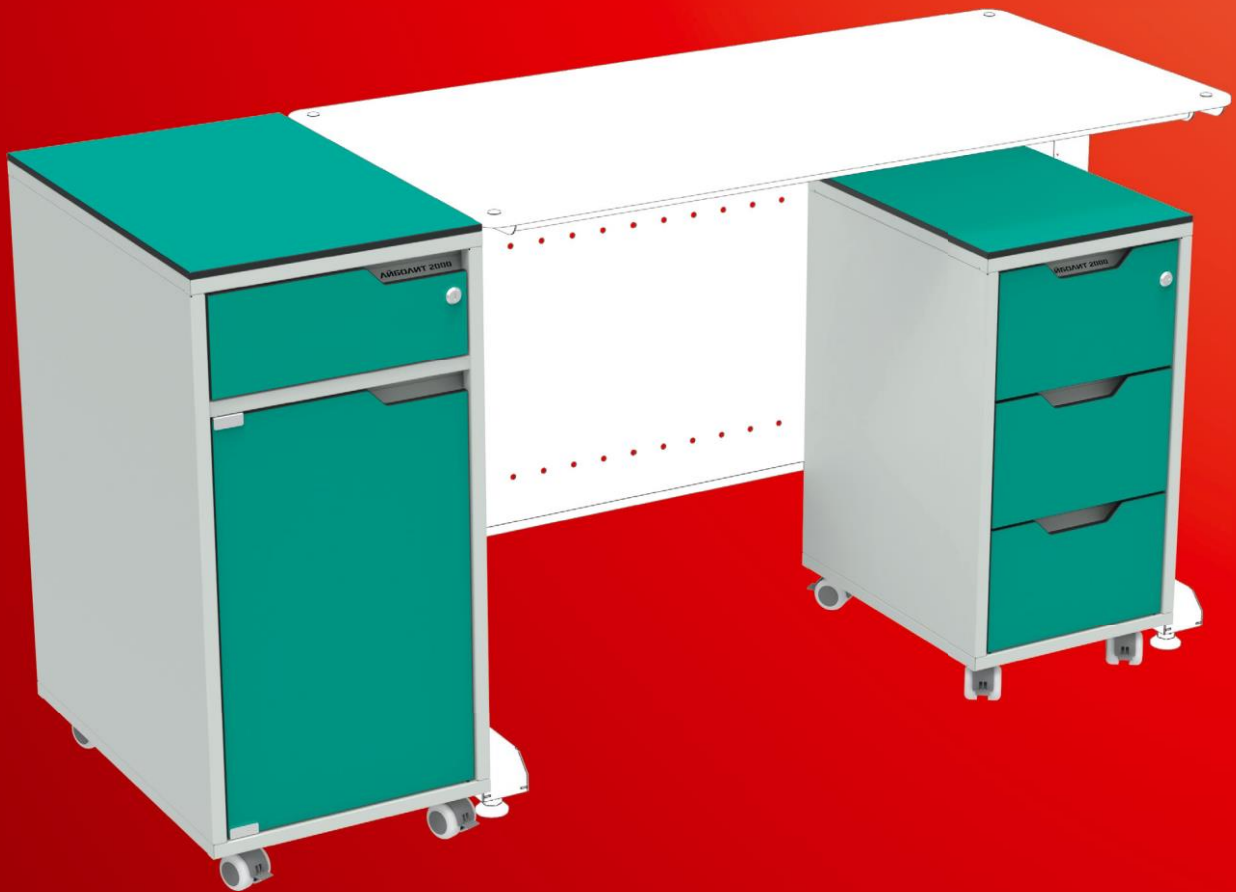


*2 tables + add-on structure.
Unit 1800x1200 mm*



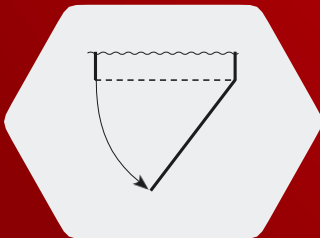
*2 tables + add-on structure.
Unit 2400x1200 mm*

Lab file cabinets

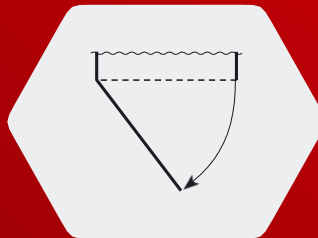


Hinged doors fabrication versions

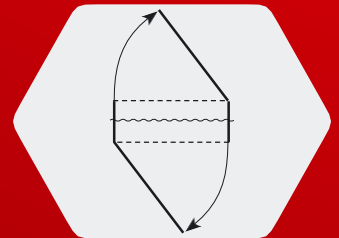
Right



Left



Standard



Advantages

File cabinets are purposed for outfitting of diagnostic labs, hospitals and healthcare providers.

CONVENIENT

• Two size versions:

1. **rolling type (350x465x690 mm)**

2. **attachable type (400x600x850 mm)**

– this item widens a table's work surface. High movability is achieved by means of self-castoring double wheels (with brakes).

QUALITY

• High table board chemical resistance (table board и фасады - HPL plastic).

SAFETY

• File cabinets materials have antimicrobial properties. Movability with fixation option makes cleaning process easier and improves general operating performance of an item.

Work surface – high strength chemically resistant HPL plastic.

Frame construction – steel frame with antimicrobial polymer coating.

Rolling file cabinets



ТП-1а

File cabinet with hinged door (lockable type).

This item is fitted with quick release adjustable shelf.

Standard version is also available (double-face file cabinet, left/ right front face opening depending on its location).



ТП-1а

File cabinet with three pullout drawers.

Pulling out is performed by means of ball type slides.

Top drawer is lockable type.



ТП-1а (ver. 2)

File cabinet with two pullout drawers.

Pulling out is performed by means of ball type slides.

Inner dimension of top drawers: 280x410x100 mm, bottom drawer dimensions: 280x410x280 mm.

Top drawer is lockable type.

	right	left	standard
ТП-1а	+	+	+
ТП-1ла			+
ТП-1ла (ver. 2)			+
ТЛ-10а	+	+	
ТЛ-10На	+	+	
ТЛ-11а	+	+	
ТЛ-12а			+
ТЛ-04а			+



Lab file cabinets

- ◆ Work surface (table board + фасады) – HPL plastic.
- ◆ Frame construction (supports) – metal frame with polymer coating.
- ◆ Front face handle – cut-in type; flat with file cabinet surfaces.
- ◆ Lock – blocks a drawer/ door.
- ◆ Wheel assembly – double wheels with brakes.

Attachable file cabinets



TЛ-10a

File cabinet with hinged door (lockable type).

This item is fitted with quick release adjustable shelf (to be mounted on cleats in 3 positions and separates inner space in proportions 1/3, 1/2).



TЛ-12a

File cabinet with three pullout drawers.

Pulling out is performed by means of ball type slides.

Inner dimensions of top drawers: 330x410x100 mm, bottom drawer dimensions: 330x410x280 mm. Top drawer is lockable type.



TЛ-10Ha

File cabinet with hinged door (lockable type) and cut-out compartment.

Inner compartment dimensions: 360x595x140 mm.

This item is fitted with quick release adjustable shelf (to be mounted on cleats in 3 positions and separates inner space in proportions 1/3, 1/2).



TЛ-04a

File cabinet with four pullout drawers.

Pulling out is performed by means of ball type slides.

Inner drawers dimensions: 330x410x100 mm.

Top drawer is lockable type.

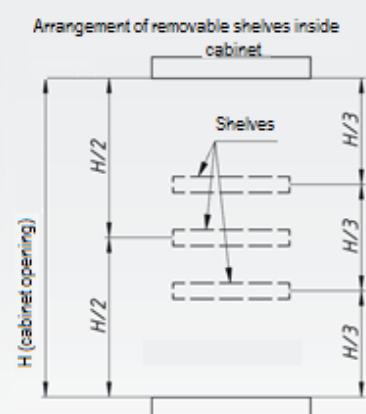


TЛ-11a

File cabinet with hinged door (lockable type) and pullout drawer.

Inner drawer size: 330x410x85 mm.

This item is fitted with quick release adjustable shelf (to be mounted on cleats in 3 positions and separates inner space in proportions 1/3, 1/2).



This schematic is applicable for ТЛ-1a, ТЛ-10a, ТЛ-10Ha, ТЛ-11a

Lab desks with wash sink



Advantages

Lab table with wash sink is purposed for outfitting of diagnostic labs, hospitals and healthcare providers.

CONVENIENT

• Structure «transparency» improves treatment accessibility, minimizes dust accumulation and creates no obstacle for free air circulation.

Rounded corners simplify cleaning process and improve operating performance of an item.

QUALITY

• High table board chemical resistance (HPL plastic table board), MICROBAN® protection, and high moist / wear resistance performance.

Sink material – stainless steel.

SAFETY

• Item materials have antimicrobial properties and prevent fungi/ mold growth.

Work surface – high strength chemically resistant HPL plastic (table board 600x600/900/1200 mm) and stainless steel (wash sink).

Frame construction – steel frame with antimicrobial coating (consists of 2 weld supports, connecting screen and stiffeners set).

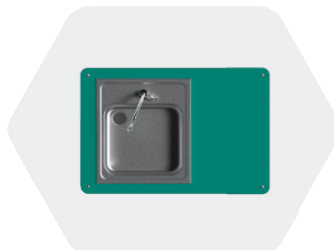
Fabrication versions

CTM – 600a



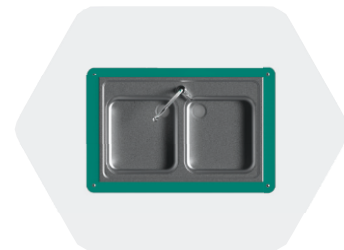
• Dimensions: 600x600x850 mm

CTM – 900/1a



• Dimensions: 900x600x850 mm

CTM – 900/2a



• Dimensions: 900x600x850 mm

CTM – 1200/1a



• Dimensions: 1200x600x850 mm

CTM – 1200/1.1a

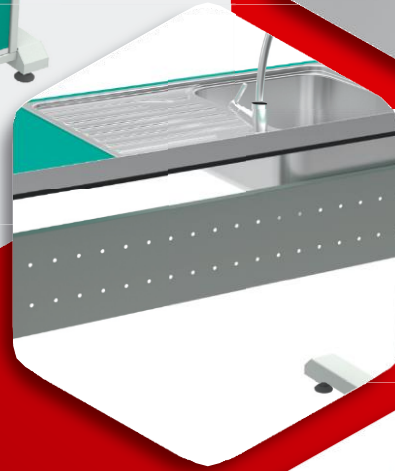


• Dimensions: 1200x600x850 mm

CTM – 1200/2a



• Dimensions: 1200x600x850 mm



Lab table with wash sink

- ◆ Work surface (table board) – HPL plastic.
- ◆ Frame construction – metal frame with polymer coating, supports are moved from back edge of table board to 100 mm in order to ensure table board will be adjacent to the wall when laying cables along the wall.
- ◆ Wash sink material – stainless steel.
- ◆ Height adjustment of back strainer (to be adjusted on site).
- ◆ Options (add-on structures + screen + rolling file cabinet).

Options of lab table with wash sink



Single-leaf rolling file cabinet

Improves the appearance. To be rolled under table with single basin sink and encloses lower part of basin including S-tube.

This item fits the following tables: CTM-600 and CTM-1200/1.



Double-leaf rolling file cabinet

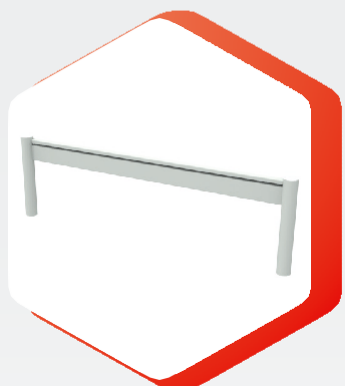
Improves the appearance. To be rolled under table and encloses lower part of basin including S-tube (not applicable for table CTM-600).

The following options are available as per table length: 900/1200.



Wall-adjacent piece

This item limits a table's working surface. Prevents fluids from inflowing from table backside.



Single add-on structure
Height: 355 mm.

This item is purposed to improve functionality of table by means of arrangement of hinged components (trays, shelves, brackets).

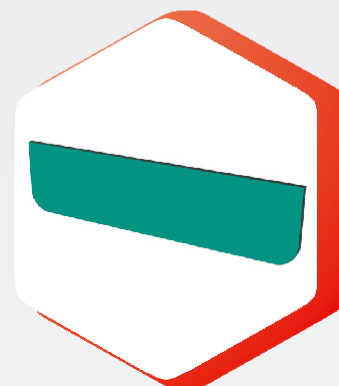
The following options are available as per table length: 900/1200.



Double add-on structure
Height: 555 mm

This item is purposed to improve functionality of table by means of arrangement of hinged components (trays, shelves, brackets).

The following options are available as per table length: 900/1200.



Decorative screen

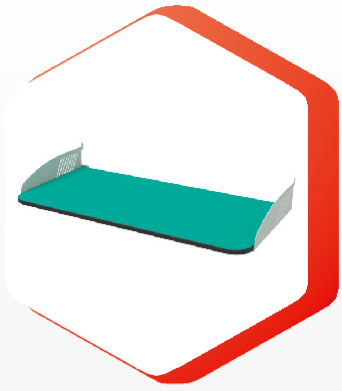
This item is to be mounted under table board and encloses lower part of basin. The following options are available as per table length: 600/900/1200.



Lab table with wash sink

- ◆ Work surface (table board) – HPL plastic.
- ◆ Frame construction – metal frame with polymer coating, supports are moved from back edge of table board to 100 mm in order to ensure table board will be adjacent to the wall when laying cables along the wall.
- ◆ Sink material – stainless steel.
- ◆ Height adjustment of back strainer (to be adjusted on site).
- ◆ Options (add-on structures + screen + rolling file cabinet).

Hinged components for add-on structures of lab tables



Shelf 515x250 mm

This item is purposed for arrangement of different documents and lab accessories.

Material: steel with chemically resistant plastic polymer coating.



Tray 305x220 mm

This item is purposed for arrangement of different lab accessories.

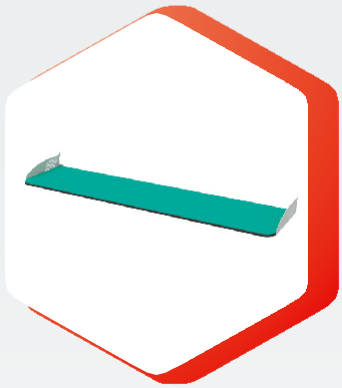
Material: steel with polymer coating.



Mounting panel

This item is purposed for combining of a number of trays (located one under the other) into a unit.

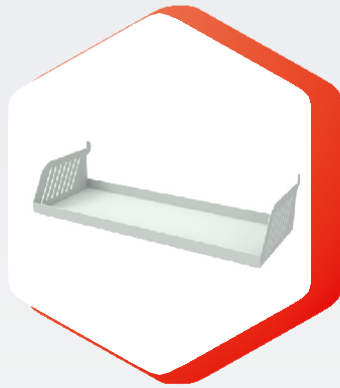
Material: steel with polymer coating.



Shelf 1030x250 mm

This item is purposed for arrangement of different documents and lab accessories.

Material: steel with chemically resistant plastic polymer coating.



Tray 305x113 mm

This item is purposed for arrangement of small lab accessories.

Material: steel with polymer coating.



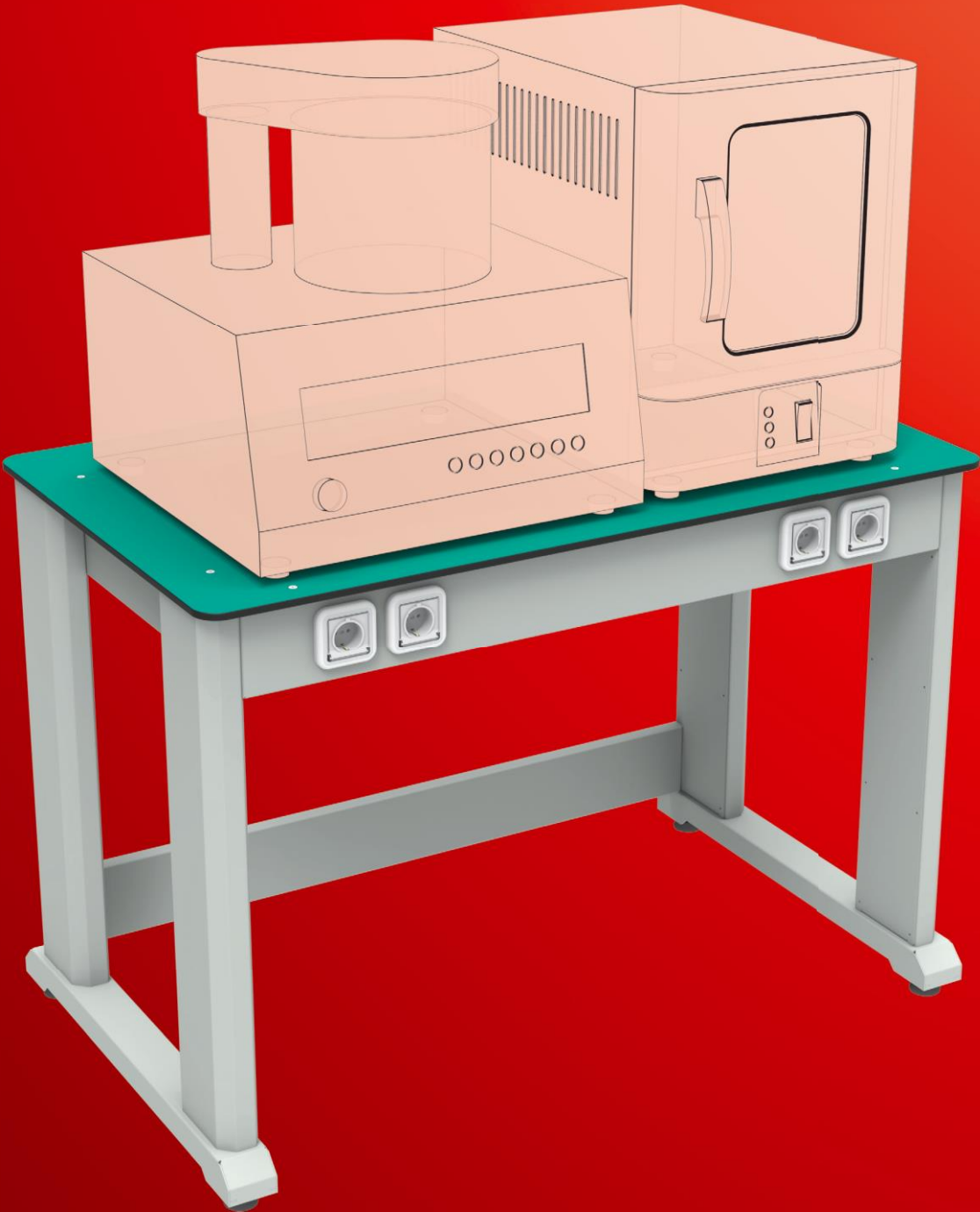
Drying device with removable tray

This item is purposed for drying of different lab vessels and fitted with removable tray for moist collection.

Drying device is to be mounted on double add-on structure.

Material: stainless steel (AISI 304).

Lab desks for equipment arrangement



Advantages

Table is purposed for outfitting of diagnostic labs, hospitals and healthcare providers.

CONVENIENT

● Custom size fabrication is available (basic version: 1200x700x850 mm).

QUALITY

● High table board chemical resistance (HPL plastic).

SAFETY

● Table materials have antimicrobial properties.

This item can be fitted with socket shutdown protection.

Work surface – high strength chemically resistant HPL plastic.

Frame construction – steel frame with antimicrobial polymer coating.

Reinforced table frame – enables arrangement of equipment of up to 500 kg total weight. In order to ensure stable position this item is fitted with adjustable supports. Option: sockets (for electric devices connection).

Table options for equipment arrangement



Sockets for extra device connection

To be located on front pedestal panel (under table board), cut-in type, earthing/ protective cap are provided. Protection grade: IP44.



Protective shutdown device, 16A

To be located on front pedestal panel (under table board), enables to cut power for all connected devices in one movement.

Lab carts



Advantages

Carts are purposed for outfitting of diagnostic labs, hospitals and healthcare providers.

CONVENIENT

- Two fabrication versions:
 - 1) Standard cart
 - 2) Custom cart – to select optimal solution corresponding to a lab operation processes.

High movability of carts is achieved by means of self-castoring wheels, two of these wheels are fitted with separate brakes.

QUALITY

- High table board chemical resistance (HPL plastic).

SAFETY

- Carts materials have antimicrobial properties. Movability with fixation option makes cleaning process easier and improves general operating performance of an item. Transport handle improves general operating performance of an item.

Work surface – high strength chemically resistant HPL plastic 600x500 mm.

Frame construction – steel frame with antimicrobial coating (consists of two weld supports, connection screen and two stiffeners).

Fabrication versions

Standard cart ТЛ-1a



- Dimensions: 500x600x850 mm

This item can transport any kind of receptacles of maximum size: 370x550 mm.

Can be fitted with extra shelves (HPL plastic, metal brackets).

Individual shelf adjusting – adjusting spacing is 25 mm.

«Transparent structure» - shelf contents are accessible from each side.

This item can be complete with trays.

Custom cart ТЛ-2a



- Dimensions: 500x600x850 mm

Cart structure is designed for transporting and arrangement of quick removable special trays 25 and 65 mm in height.

There are no fixed shelves – this simplifies cart's sanitary cleaning. Good adjustment performance – tray can be inserted into any spare slot (mounting/ dismantling takes just a few seconds).

Cart can transport up to 4 trays at same time (distance between slots is 130 mm).

«Side protection» - shelf contents are accessible from front and back side of cart.



Lab carts

- Work surface (table board) – HPL plastic.
- Frame construction – metal frame with polymer coating.
- Wheels – self-castoring type, D=125 mm, fitted with brake and plastic bumper.
- Transportation handle – metal type, L=320 mm.

Options of lab carts



Standard cart

This item is purposed for standard carts.

Material: steel with antimicrobial coating.

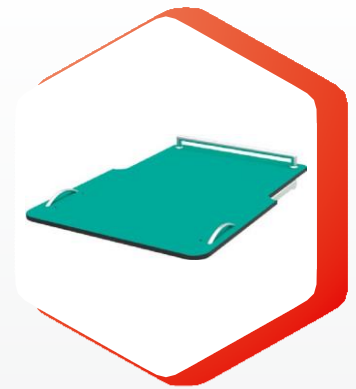


Custom cart

To be inserted into a custom cart slots.

Tray is to be installed on a shelf of standard carts.

Material: steel with antimicrobial coating.

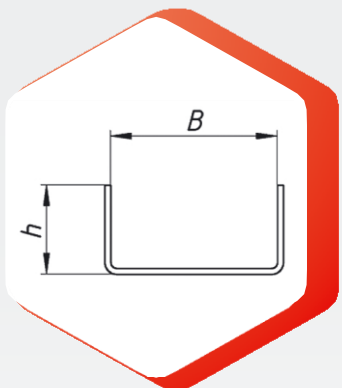


Standard shelf for standard cart

This item is purposed for improving the functionality of a standard cart.

Material: HPL plastic. Item is fitted with tray limiter.

Structure implies two versions of limiter adjusting: (B = 330 / 370 mm).



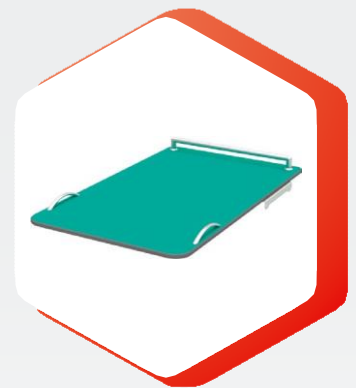
Standard tray section

B = 370 mm, h = 35 / 65 mm



Custom tray section

B = 330 mm, h = 35 / 65 mm

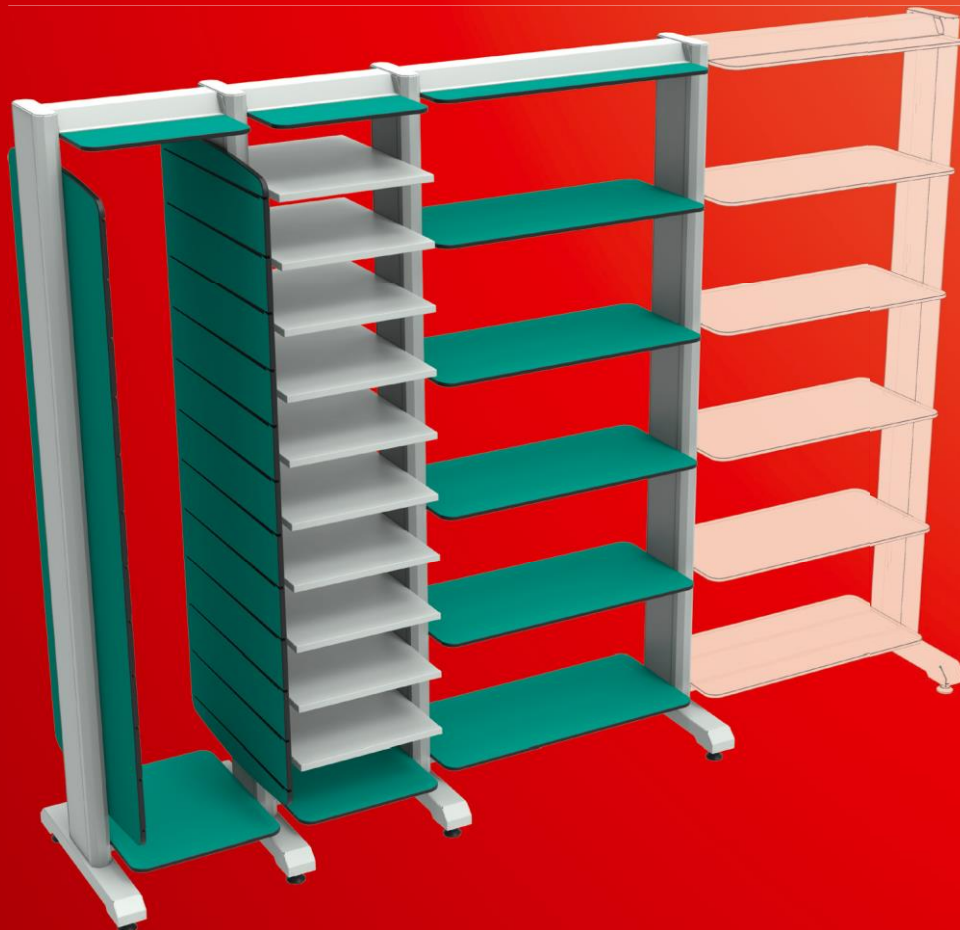


Custom shelf for standard cart

This item is purposed for improving the functionality of a standard cart.

Material: HPL plastic. Item is fitted with limiters (designed for custom trays, B = 330 mm).

Modular storage systems



Advantages

Modular storage systems are purposed for outfitting of diagnostic labs, hospitals and healthcare providers.

CONVENIENT

◆ Supports are fitted with adjustable rests (to enable stability).

Modular design allows arranging multi-sectional units performing different functions.

QUALITY

◆ All steel elements are coated with polymeric powder (shiny grey, RAL 7035).

SAFETY

◆ Consist of weld supports, shelves and stiffeners.

Work surface – high strength chemically resistant HPL plastic.

Frame construction – steel frame with antimicrobial polymer coating.

Racks fabrication versions

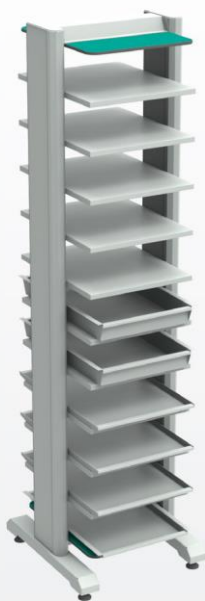


Document rack CmЛ -1a

Dimensions: 800x550x1900 mm.

Shelves are made of solid chemically resistant plastic 100 mm in thick with decorative coating.

Allowable unified load: up to 15 kg to each shelf.



Tray rack (standard) CmЛ -2a

Dimensions: 500x550x1900 mm.

This item is purposed for storage of any kind of working receptacles of maximum dimensions: 370x550x135 mm.

Panel shelves are made of steel with polymeric powder coating or chemically resistant plastic (option).

Distance between shelves: 165 mm.

Allowable unified load: up to 10 kg to each shelf.

«Transparent structure» - shelf contents are accessible from each side.

This item can be complete with trays.



Custom tray rack CmЛ-3a

Dimensions: 500x550x1900 mm.

This item is purposed for arrangement and storage of quick removable custom trays.

Side panels are made of chemically resistant HPL plastic (thickness: 14 mm).

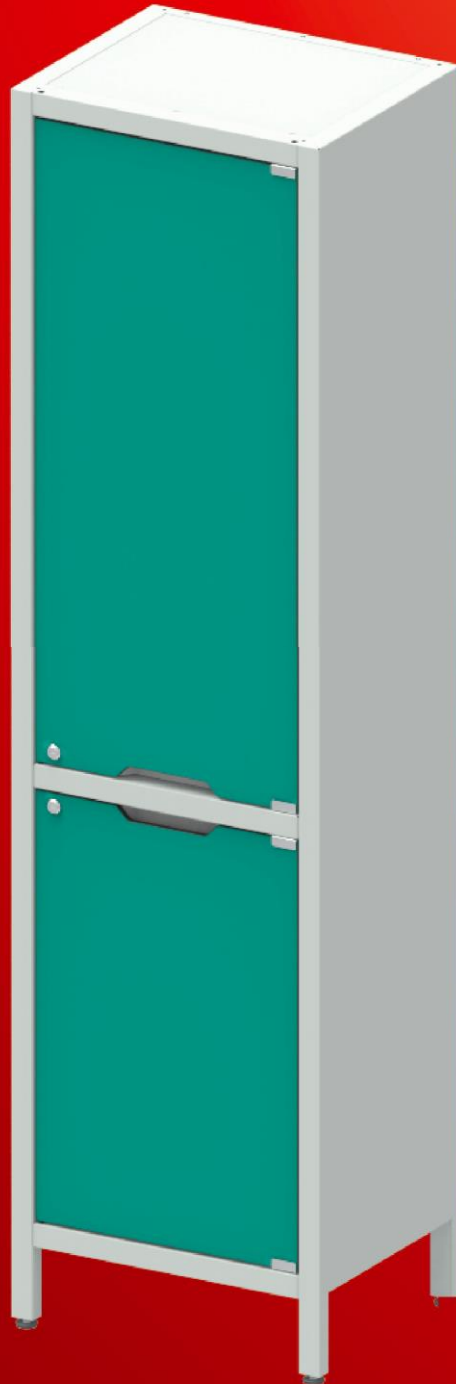
There are no fixed shelves – this simplifies sanitary cleaning.

Good adjustment performance – tray can be inserted into any spare slot (mounting/ dismounting takes just a few seconds).

Cart can transport up to 12 trays at same time (distance between slots is 130 mm).

«Side protection» - shelf contents are accessible from front and back sides.

Single-leaf lab cabinets



Advantages

This cabinet is purposed for operations with microorganisms of pathogenicity groups III-IV and helminthes in clinic labs, hospital labs and higher and secondary institutions and complies with GOST R 50444-92. Purpose: storage of medicaments, instruments, hospital documents and patients' records.

Dimensions (WxDxH) 500x400x1850 mm.

Cabinet consists of two sections.

Top section is fitted with hinged doors and three adjustable shelves inside. Lockable type door is fixed by means of magnets. Option: upper section can be fitted with a metal safe box (safe box is to be mounted on standard cleat mounts; safe box door is lockable type).

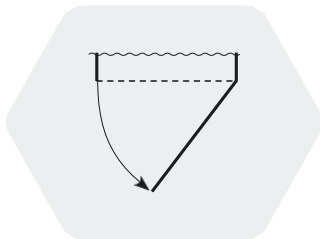
Shelves can be adjusted by height by means of removable cleats. Bottom section can be of two versions:

1) Section fitted with hinged door and adjustable shelf (1 pce.). Lockable type door is fixed by means of magnets.

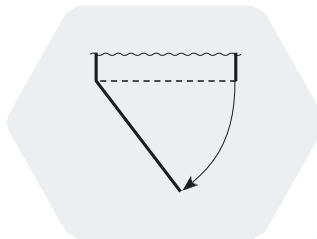
2) Section with four pullout drawers inside on ball type slides (L = 350 mm). Top drawer is lockable type.

Door opening versions

Right



Left



● Right («Cabinet identification»/R) – door is opened to the right.

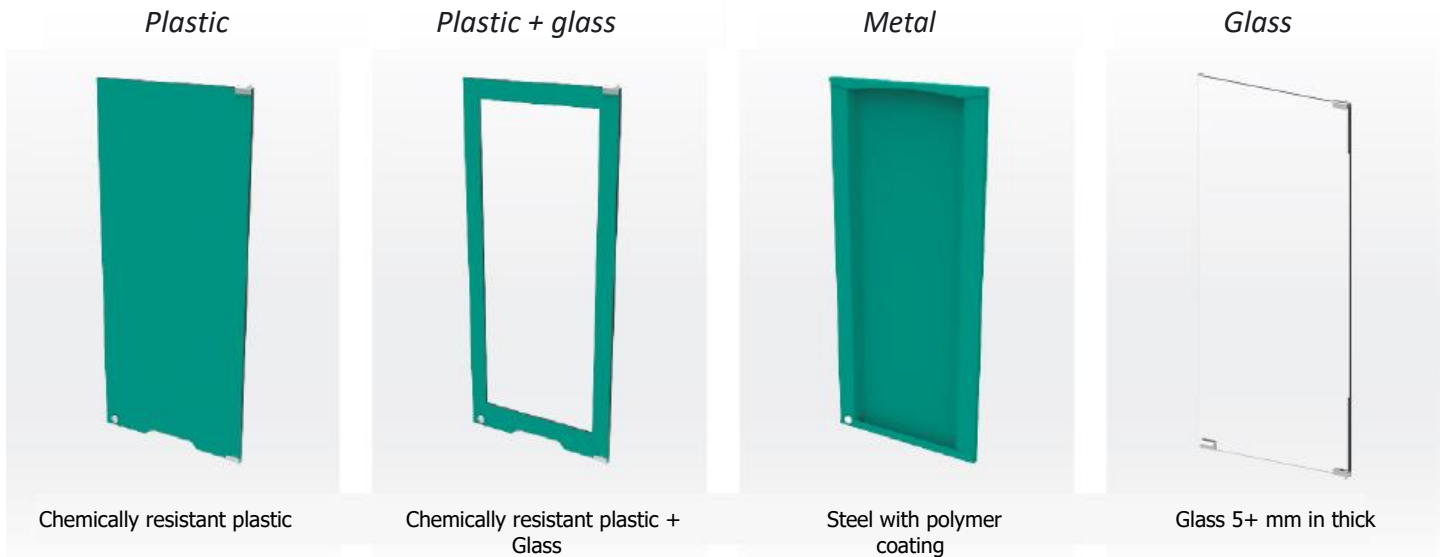
● Left («Cabinet identification»/L) - door is opened to the left.

Item frame is welded type, made of steel with polymeric powder coating.

In order to make sanitary cleaning more convenient cabinet structure is fitted with square cut legs (profile section: 25x35 mm; height: 110 mm); in order to compensate floor irregularities this item is adjustable type.

This item is supplied pre-assembled and packed inside a corrugated card box.

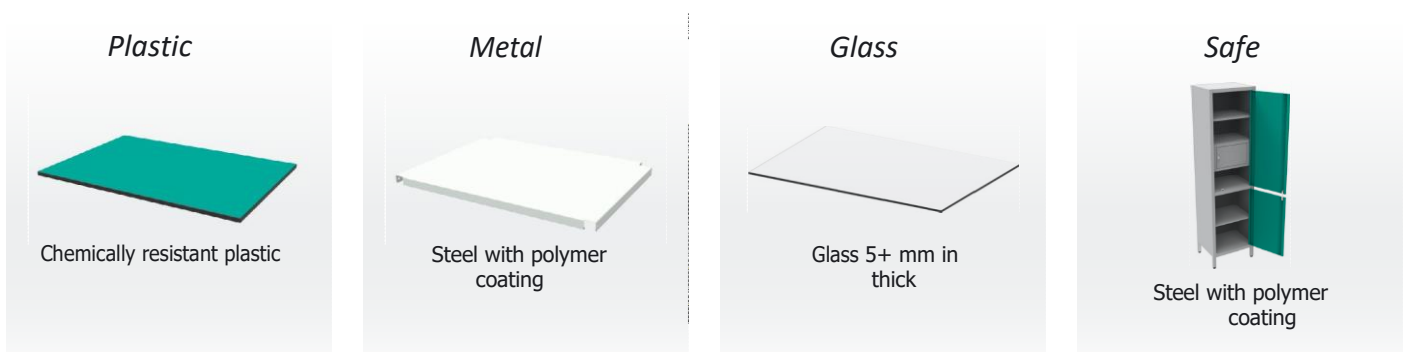
Fabrication versions of top front faces



Fabrication versions of bottom front faces



Shelves fabrication versions



Standard cabinet configurations



Version 1

Top face – plastic
Bottom face – plastic
Top shelves – metal
Bottom shelves – metal



Version 2

Top face – plastic + glass
Bottom face – plastic
Top shelves – plastic
Bottom shelves – metal



Version 3

Top face – glass
Bottom face – plastic
Top shelves – glass
Bottom shelves – metal



Version 4

Top face – metal
Bottom face – metal
Top shelves – metal
Bottom shelves – metal



Version 5

Top face – glass
Bottom face – metal
Top shelves – glass
Bottom shelves – metal



Version 6

Top face – plastic
Bottom face – plastic
Top shelves – metal



Version 7

Top face – plastic + glass
Bottom face – plastic
Top shelves – plastic



Version 8

Top face – glass
Bottom face – plastic
Top shelves – glass



Version 9

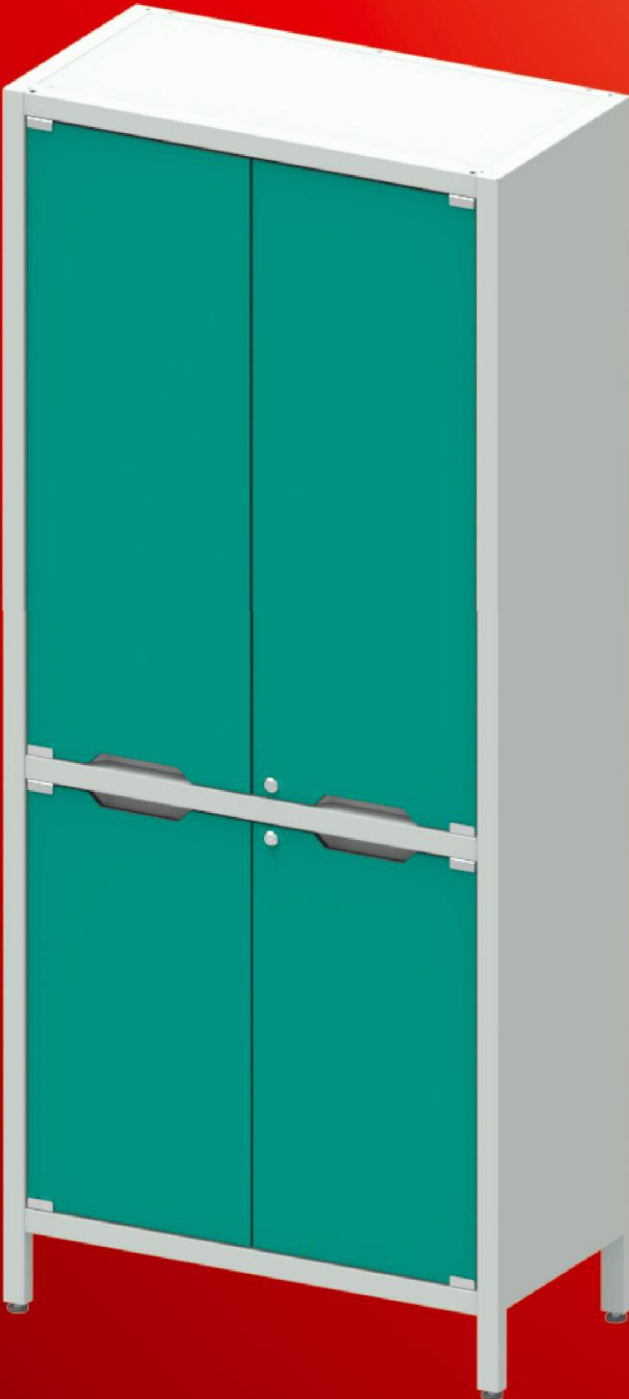
Top face – metal
B. face – metal
T. shelves – metal



Version 10

Top face – glass
B. face – metal
T. shelves – glass

Double-leaf lab cabinets



Advantages

This cabinet is purposed for operations with microorganisms of pathogenicity groups III-IV and helminthes in clinic labs, hospital labs and higher and secondary institutions and complies with GOST R 50444-92. Purpose: storage of medicaments, instruments, hospital documents and patients' records/

Dimensions: (WxDxH) 800x400x1850 mm.

Cabinet consists of two sections.

Top section is fitted with hinged doors and three adjustable shelves inside. Lockable type door is fixed by means of magnets. Doors are fixed by means of magnets.

Option: upper section can be fitted with a metal safe box (safe box is to be mounted on standard cleat mounts; safe box door is lockable type).

Shelves can be adjusted by height by means of removable cleats.

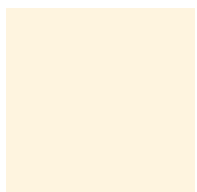
Bottom section is fitted with hinged doors and adjustable shelf. Doors are fixed by means of magnets.

Item frame is weld type, material: steel with polymer coating.

In order to make sanitary cleaning more convenient cabinet structure is fitted with square cut legs (profile section: 25x35 mm; height: 110 mm); in order to compensate floor irregularities this item is adjustable type.

This item is supplied pre-assembled and packed inside a corrugated card box.

PLASTIC COLOR SCHEME



5010 Beige base (pine)



5019 Turquoise



5035 Blue



5020 Yellow



5027 Pistachio

Top face fabrication versions

Plastic



Chemically resistant plastic

Plastic + glass



Chemically resistant plastic + glass

Metal



Steel with polymer coating

Glass



Glass 5+ mm in thick

Bottom face fabrication versions

Plastic



Chemically resistant plastic

Metal



Steel with polymer coating

Shelves fabrication versions

Plastic



Chemically resistant plastic

Metal



Steel with polymer coating

Glass



Glass 5+ mm in thick

Safe



Steel with polymer coating

Standard cabinet configurations



Version 1

Top face – plastic
Bottom face – plastic
Top shelves – metal
Bottom shelves – metal



Version 2

Top face – plastic + glass
Bottom face – plastic
Top shelves – plastic
Bottom shelves – metal



Version 3

Top face – glass
Bottom face – plastic
Top shelves – glass
Bottom shelves – metal



Version 4

Top face – metal
Bottom face – metal
Top shelves – metal
Bottom shelves – metal



Version 5

Top face – glass
Bottom face – metal
Top shelves – glass
Bottom shelves – metal



Version 6

Top face – plastic + glass
Bottom face – plastic
Top shelves – glass
Bottom shelves – metal



AYBOLIT TRADING COMPANY

Kuznetchikhinskaya Street, Nizhny Novgorod, Russia

Zip code: 603146

Tel.: +7 (831) 417-89-98

www.aybolit2000.ru